

# SEASIDE CASUAL FURNITURE

## ENVIRO WOOD

### (13) Adirondack Classic Swing rev. A

#### Parts List:

- (1) Seat Assembly
- (1) Back Assembly
- (2) Arms
- (2) Legs
- (2) Rope



#### Hardware:

- (6) 3-1/2" Connector Bolts
- (2) 2-3/4" Connector Bolts
- (5) 1-3/4" Phillip's Head Screws
- (8) Flat Washers
- (8) Lock Washers
- (8) Nuts

#### Tools Required:

- Phillip's Head Screwdriver
- 7/16 Socket or Wrench
- 4MM Allen Wrench (Included)

### Assembly Instructions

#### Step One: Set Up

**READ ENTIRE INSTRUCTIONS BEFORE BEGINNING!** Carefully remove contents from box. Make sure that all parts and hardware are included.

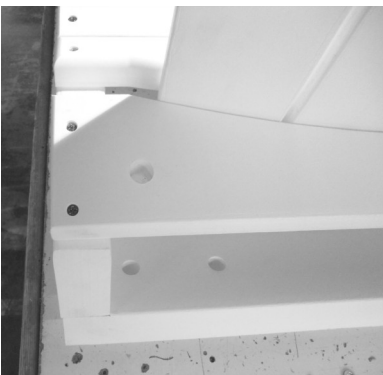
#### Step Two: Leg Assembly



Place Leg on side of Seat Assembly on top of the Front Rope Support, while aligning pre-drilled holes on both Legs and Seat Assembly, also make sure Arm Support already attached to leg face inside of the swing (Left Picture). Attached Leg with (2) 3-1/2" connector bolts (Right Picture). Finger tighten flat & lock washers and nuts. Do not tighten at this time. Repeat process got other side.



#### Step Three: Back Assembly



Install the Back Assembly to the Seat Assembly aligning pre-drilled holes on both assemblies together. Attach using (2) 1-3/4" Phillips Head Screws (Left Picture). Repeat process of other side. Attach middle of the Back Assembly using (1) 1-3/4" Phillips Head Screw (Right Picture).



### **Step Four: Arm Assembly**



Arms should be installed with curve side on the inside of the chair. (Left Picture). Place Arm on top of Front Leg. Align pre-drilled hole in arm with the pre-drilled hole located at the top of the Front Leg (Right Picture). Install a 3-1/2" connector bolt through pre-drilled hole in the Front Leg, then through pre-drilled hole under arm. Install flat washer, lock washer and nuts. Do not tighten at this time. Repeat process on other side.



### **Step Five: Arm & Back Attachment**



Align pre-drilled screw hole and rope hole on the Arm and Back Assembly's Upper Yoke (Left Picture). Install (1) 2-3/4" connector bolt through pre-drilled hole through arm and through upper back yoke (Right Picture). Finger tighten flat & lock washers and nuts. Do not tighten at this time. Repeat process for opposite side.



### **Step Six: Tightening of Hardware**

Tighten all connections. **Do not over tighten!!! Over tightening of hardware can cause damage to the item.**

### **Step Seven: Rope Instructions**

See following page for Rope Attachment Instructions.

# SEASIDE CASUAL FURNITURE

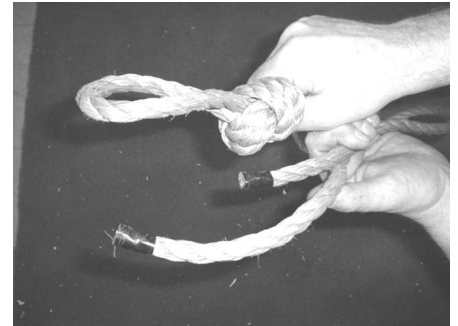
## ENVIRO WOOD

### (13) Adirondack Classic Swing Rope Instructions

#### Assembly Instructions

#### Step One: Set Up

**ROPE IS TO BE INSTALLED AFTER THE ASSEMBLY OF THE REST OF THE SWING!** There are two different lengths of the same rope, from the looped knot there is a Long side and a short side. (Right Picture).



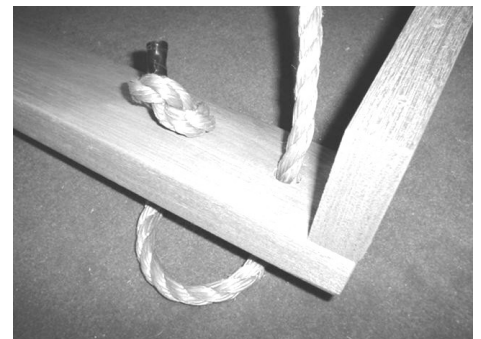
#### Step Two: Front Swing Support Rope Connection



Thread the short length of rope down through the outside hole on the Front Swing Support and up through the inner hole on the Front Swing Support. Tie the end in a knot (Left Picture). Repeat process for other side.

#### Step Three: Rear Swing Support Rope Connection

Thread long length of rope down through the holes in the back of the Arm and Upper Back Yoke and through the Lower Back Yoke and the Rear Swing Support. Thread the rope up through the second hole in the Rear Swing Support and tie a knot at the end (Right Picture). Repeat process on other side.



#### Step Three: Adjusting Rope Connections

Make any minor adjustments to the rope to allow Arms to be level with the ground, and check knots to make sure that they are tied and secure. **The knots need to be tight enough to hold the weight of the Swing and those of who may be sitting on the Swing. For Safety reasons, please make sure that all the knots are completely secure.**