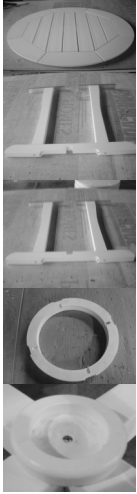


# SEASIDE CASUAL FURNITURE

## ENVIRO WOOD

### (34, 41, 66, 69) 36" Westport Bistro Tables (34, 66, 69 rev. A) (41 rev. B)



- (1) Table Top
- (1) Leg Assembly 1
- (1) Leg Assembly 2
- (1) Foot Rest  
(66 & 69 Only)
- (1) Umbrella Base Cup



#### Hardware:

- (12) 3/4" Pan Head Screws
- (1) Umbrella Reducer
- The Following is for (34,66 Only)
- (1) 1-1/4" Phillip's Head Screw
- (2) Thumb Screws
- The Following is for (66 & 69 Only)
- (4) 1-1/2" Pan Head Screws

#### Tools Required:

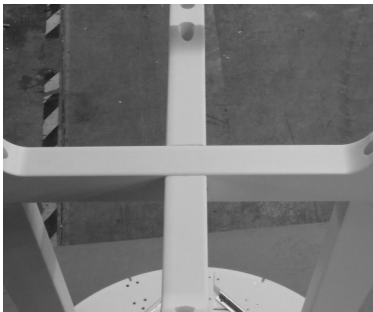
- Phillip's Head Screwdriver
- 4MM Allen Wrench (Included)

### Assembly Instructions

#### Step One: Set Up

**READ ALL INSTRUCTION BEFORE BEGINNING!** Carefully remove contents from box. Make sure that all parts and hardware are included. Assembly of Table may require two people.

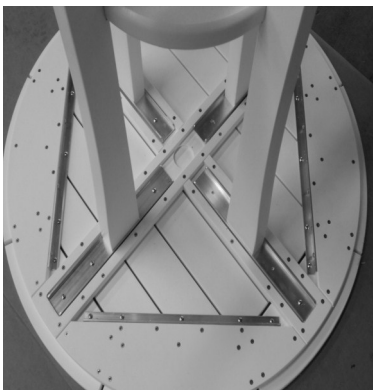
#### Step Two: Leg Assembly



Align the notches in the feet with one another, may need to be manipulated (Left Picture). For (66 & 69 Only): Insert Foot Rest in between the leg assemblies, aligning the notches in the foot rest with notches in the legs. Make sure the pockets are facing the feet do not secure at this time (Right Picture).

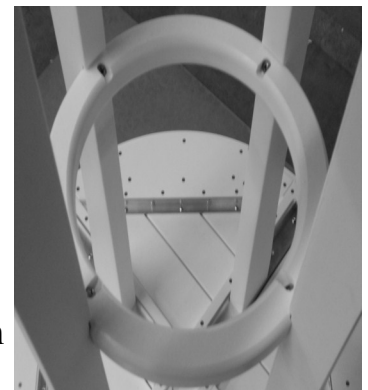


#### Step Three: Attaching Leg Assembly



Place Table Top upside down on a clean flat surface, may use bubble wrap. Flip Base Assembly over and align the aluminum in the notches under the table top, aligning the short aluminum in the notches under the table top. Secure using (12) 3/4" pan head screws (Left Picture).

(66 & 69 Only) Secure foot rest to the legs with (4) 1-1/2" pan head screws (Right Picture) .



### Step Four: Umbrella Accessories If Needed (34, 66, 69 Only)

Turn assembled table to standing position. Place Base Cup in center of Feet Intersection facing up. Attach using 1-1/4" Screws. (Right Picture)



Use Umbrella Reducer for 1 to 1-1/2" Umbrella Poles. (Right Picture)



Use (2) Thumb Screws to Secure Umbrella under Table Top in the Umbrella Clamp. (Right Picture)

